

# Welcome

Thank you for choosing AURALiC ARIES streaming bridge. The ARIES serves as a “bridge” between music files on network storage or high quality online streaming services and your DAC — enabling DAC for the first time to stream high-resolution music quickly and wirelessly in virtually any sampling rate, including DSD, Double-Rate DSD and DXD.

## Before You Start

ARIES is based on **OpenHome** streaming structure with gapless, multi-room and multiply control point feature. It is also backward compatible with uPnP AV and DLNA standard. **You will need at least one streaming server running on your network** to provide music content and control software to access the ARIES and streaming server.

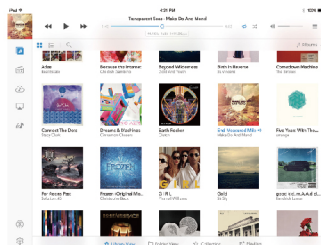
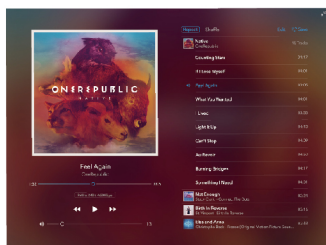
## AURALiC Lightning DS App

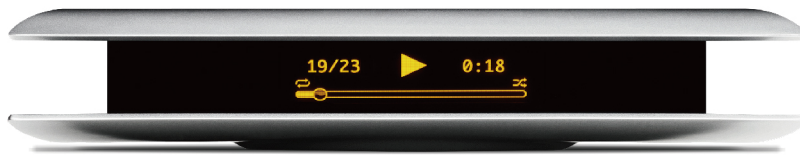


**Lightning DS** is our official control software for ARIES to access the full function. Lightning DS is currently available on Apple App Store for iPad only. The iPhone and Android software will be available by September – October 2014.

Lightning DS is quite intuitive, most people can use it without training. We also provide detailed operation manual in the App under User's Guide section.

ARIES is also compatible with other OpenHome and uPnP based control software with limited function such as Linn Kinsky, Lumin App, BubbleDS and etc. **You can access to WiMP, Qobuz streaming service as well as ARIES hardware setting though Lightning DS only.**





## QUICK START GUIDE

---

ARIES Wireless Streaming Bridge

# Streaming Server (DLNA Server)

Most of the NAS drive, i.e. from Netgear, Western Digital, QNAP, Synology and etc. are coming with built-in streaming server function. Those streaming server, if compatible with uPnP or DLNA standard, will be compatible with ARIES and Lightning DS. Please refer to your NAS drive's manual to enable this function.

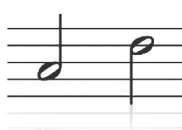
If you are trying to run a streaming server on a dedicate server, the following streaming software are and compatible with ARIES and Lightning DS.



Asset uPnP



• Twonky Media Server



• Minimserver



• J.River Media Center

## Streaming though WiFi

Most of modern WiFi routers made after 2012 with **802.11n MIMO** supporting will enable you for full format streaming though WiFi network. It is highly recommended to use **5G frequency** to stream DSD, DSD128 and DXD to ensure stable connection. To stream high-resolution music without drop out, you need to place ARIES at a place which is within reasonable distance with your WiFi router.

It is highly recommended to use enterprise grade WiFi router if you are running several ARIES as whole house streaming solution. The following home use WiFi router are been tested with good compatibility:



Netgear R6300



• Netgear Nighthawk R7000



• ASUS RT-AC68U

# Control by RC-1 Remote

You can use our RC-1 remote to control ARIES for basic operation. It is quite similar to remote control a CD Player. The key map is shown as following:



- Power on/off ARIES.



- Turn on/off front display.



- Track select for local music and streaming. Enter the number and press "OK" button to play selected track.



- Confirmation key for the track select and for other dialog use.



- Cencel key for the track select or to exit dialog window.

**RESET:** Press and hold EXIT button for 7 seconds to force system reboot.



- Select previous or next track in the queue.



- Play / Pause



- Stop



- Backward



- Fast forward



REPEAT

- Toggle repeat playback mode

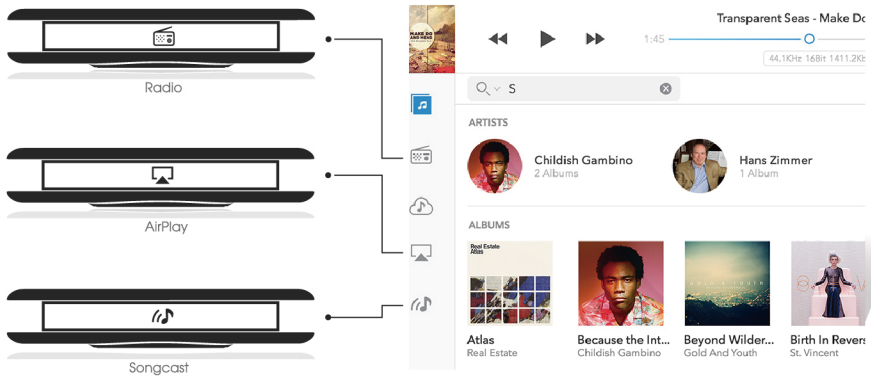
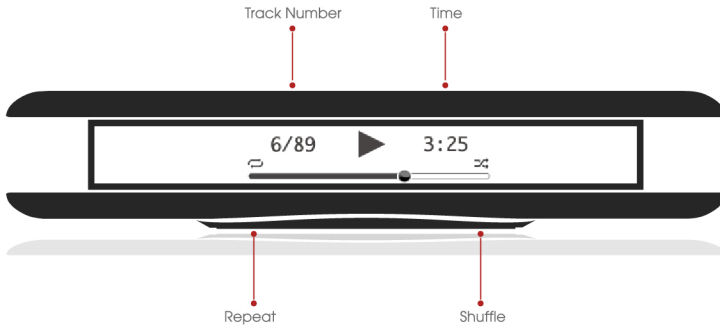


RANDOM

- Toggle shuffle playback mode



# Front Display

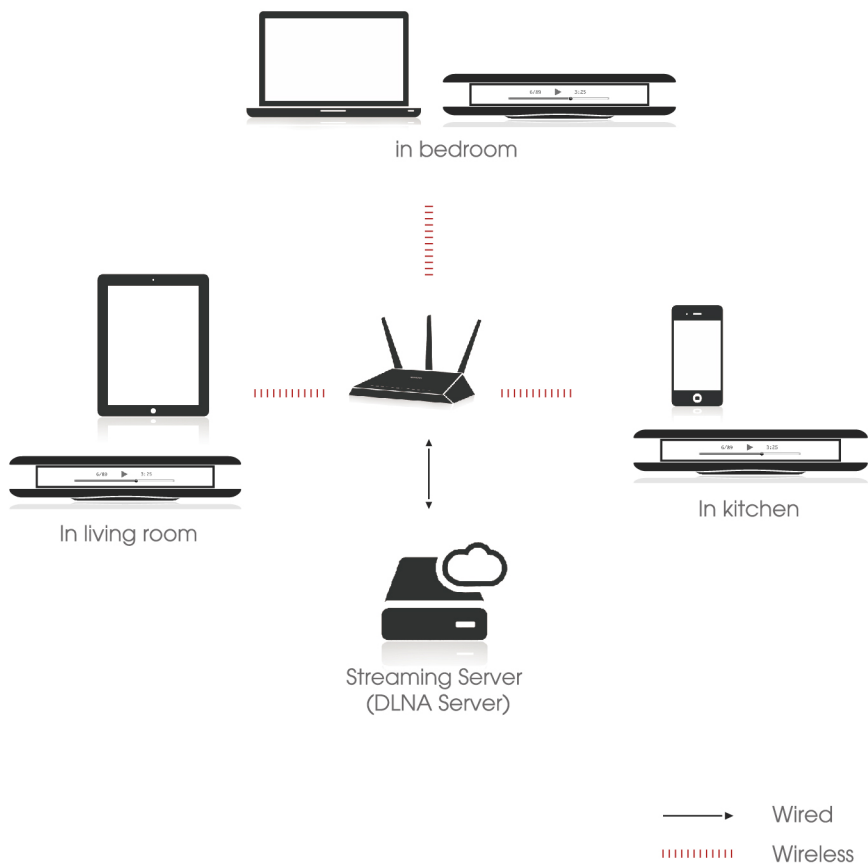


## Erase User Settings

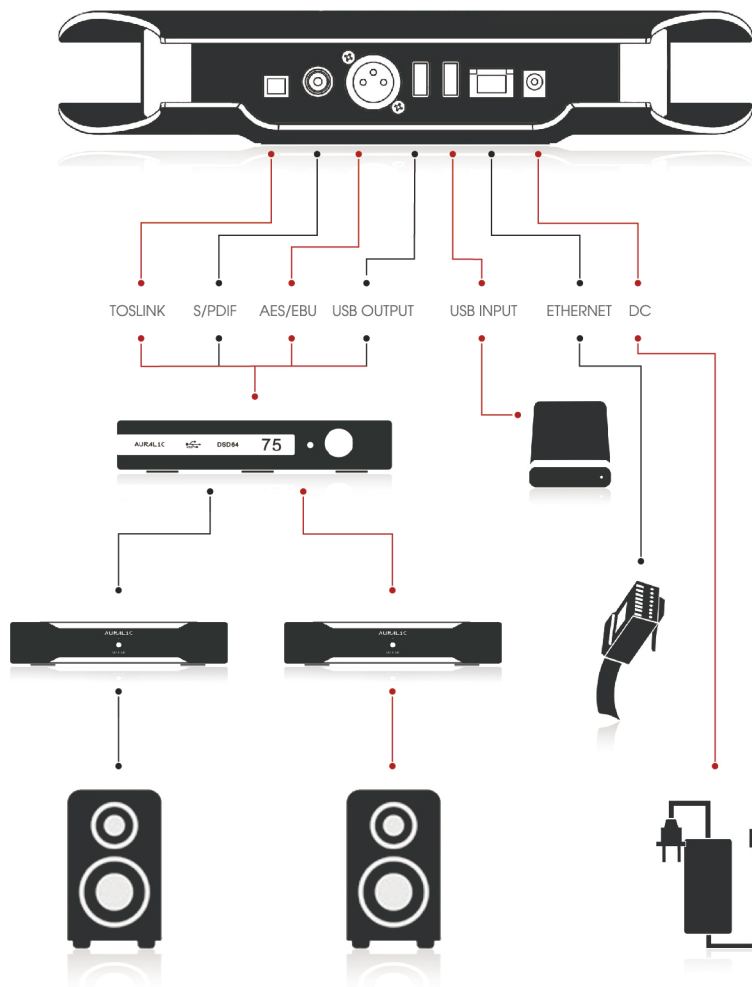
To erase user settings on ARIES, simply use a pan or paper clip to press and hold the **RESET** button on bottom of ARIES for 7 seconds until you see the hint on front display. Release the button, ARIES will erase all settings and reboot automatically.

Don't forget to plug in the ethernet cable after erase settings.

# Streaming System Setup



# Connections



# Having Problem with Your Setup?

Network streaming requests certain knowledge at the initial setup stage. We are happy to provide point to point customer service if you are not familiar with setup or having problem in using the system.

Please simply drop an email to **support@auralic.com**, or use the 'feedback' to submit your question inside Lightning App. Our technical support engineer will reply your question at first time.



**AURALiC**®  
inspire the music

AURALIC LIMITED | 声韵音响

1F Building No7, 1A Chaoqian Road, Beijing, 102200, China

12208 NE 104th St. Vancouver, WA 98682, United States

<http://www.auralic.com/>    [info@auralic.com](mailto:info@auralic.com)

TEL: +86-(0)10-57325784

TEL: +1-(360)326-8879